

STANDARD S7L4

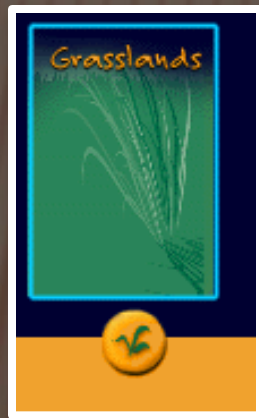
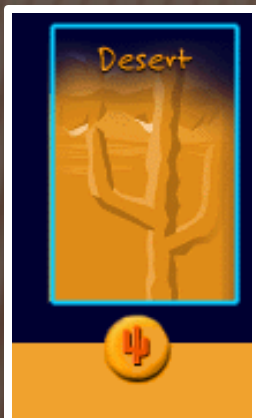
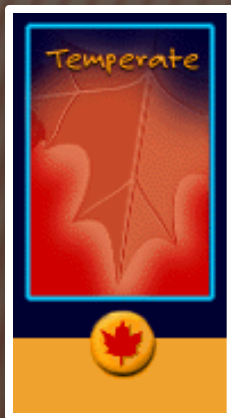
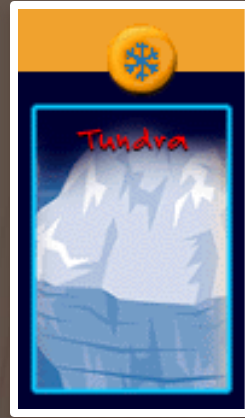
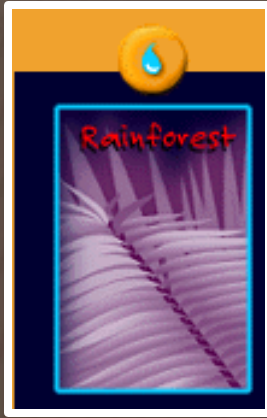
- ✘ Students will examine the dependence of organisms on one another and their environment.

- ✘ Element e:

Describe the characteristics of Earth's major terrestrial biomes (tropical rain forest, savannah, temperate, desert, taiga, tundra, and mountain) and aquatic communities (freshwater, estuary, and marine).

BIOME

- ✘ A biome is a group of land ecosystems with similar climates and organisms.
- ✘ It is mostly the climate (temperature and precipitation) in the area that determines its biome.



BIOMES

Map

Author

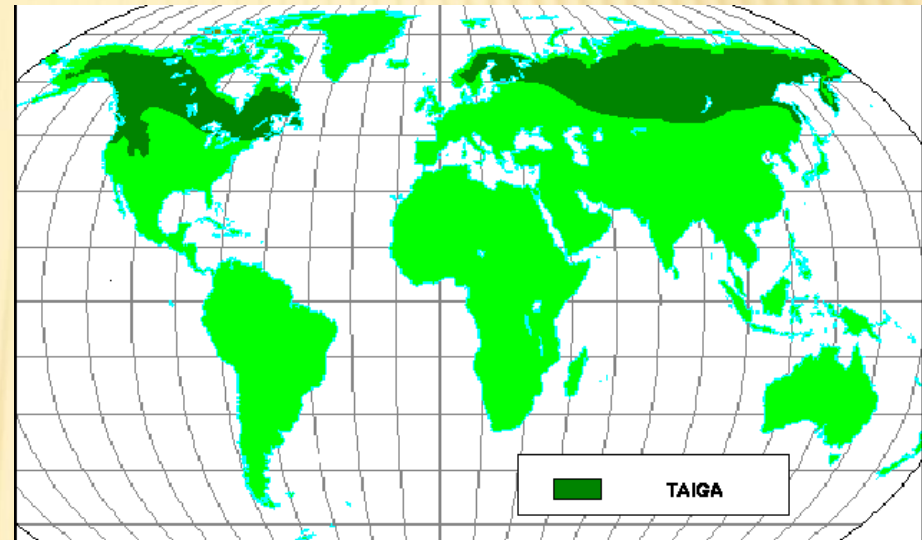
Resources

Quit



TAIGA

- ✘ It is the largest biome in the world.
- ✘ Winters are cold. Summers are warm.
- ✘ The taiga or boreal forest exists as a nearly continuous belt of coniferous trees across North America and Eurasia.



Click here to
take a look
at the
animals that
live in this
biome!



Quit



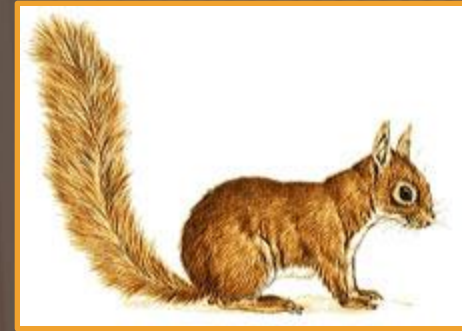
Hawk Owl



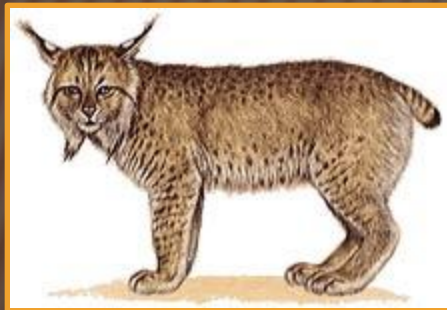
Red-Throated Loon



European Red Squirrel



ANIMALS THAT LIVE IN THE TAIGA



Lynx



Moose

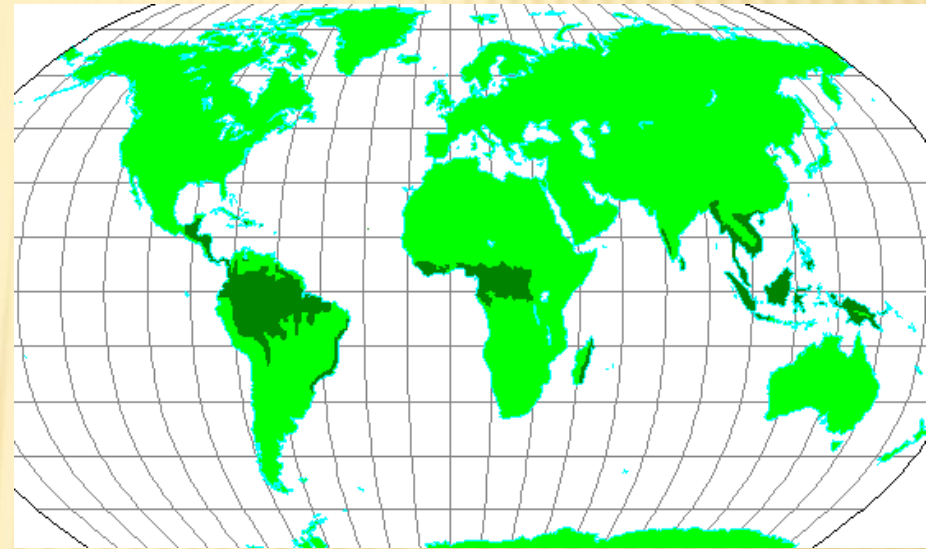


Ermine



RAINFOREST

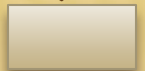
- ✘ The tropical rainforest is earth's most complex biome in terms of both structure and species diversity.
- ✘ There are two types of Rainforest – the **temperate** and the **tropical**.
- ✘ Temperature is on average 20-25° C.



Click here to
take a look
at the
animals that
live in this
biome!



Quit

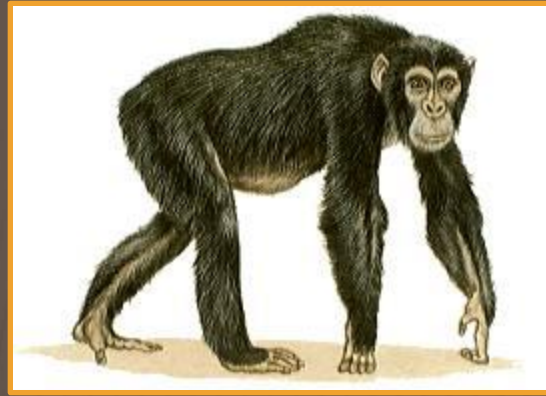


[Video about a Rainforest Animal](#)

Bearded Pig



Chimpanzee



Indian Cobra



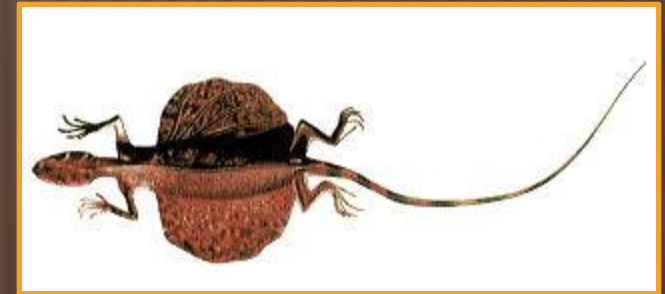
ANIMALS THAT LIVE IN THE RAINFOREST



Orangutan



Slow Loris

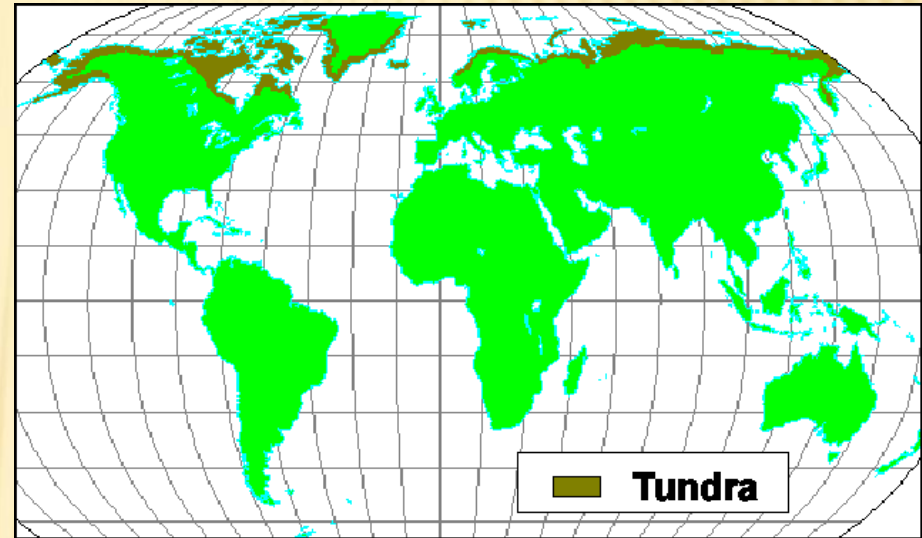


Flying Dragon



TUNDRA

- ✘ The tundra biome is at the top of the world -- around the North Pole!
- ✘ The tundra is the simplest biome in terms of species composition and food chains.
- ✘ Tundra is the coldest of all the biomes.



Click here to
take a look
at the
animals that
live in this
biome!



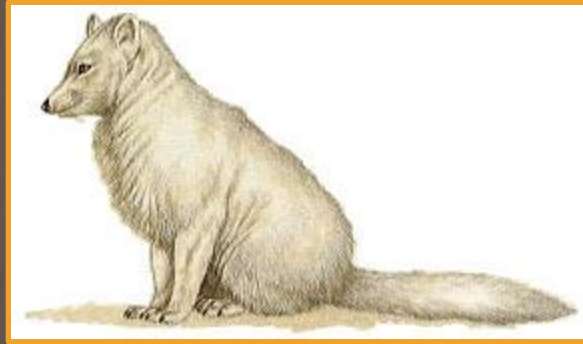
Quit



Snow Owl



Arctic Fox



Caribou



ANIMALS THAT LIVE IN THE TUNDRA



Musk Ox



Tundra Swan

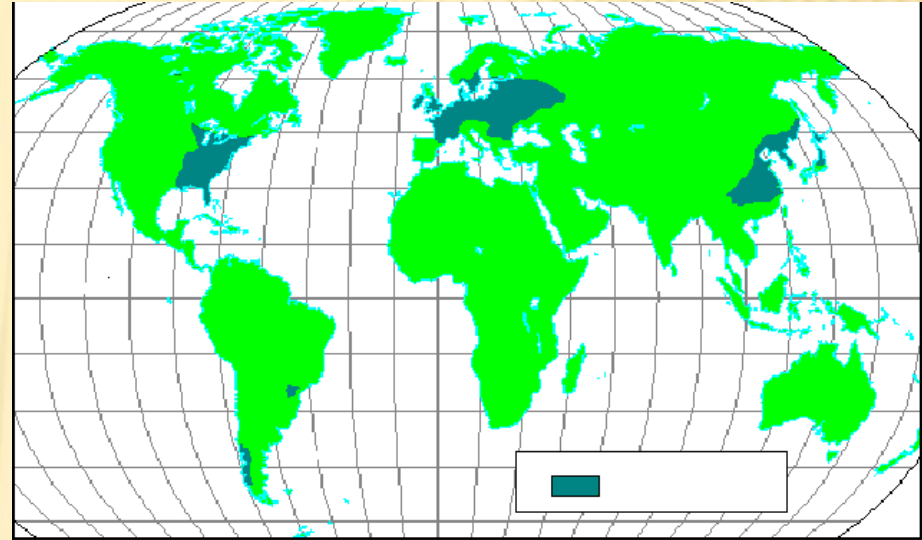


Norway Lemming



TEMPERATE

- ✘ Well-defined seasons with a distinct winter characterize this forest biome.
- ✘ Temperature varies from -30°C to 30°C .
- ✘ Animals and plants have special adaptations to cope with these yearly changes.



Click here to
take a look
at the
animals that
live in this
biome!



Quit



Black Bear



Raccoon



Wild Boar



ANIMALS THAT LIVE IN THE TEMPERATE



Cardinal



Turkey

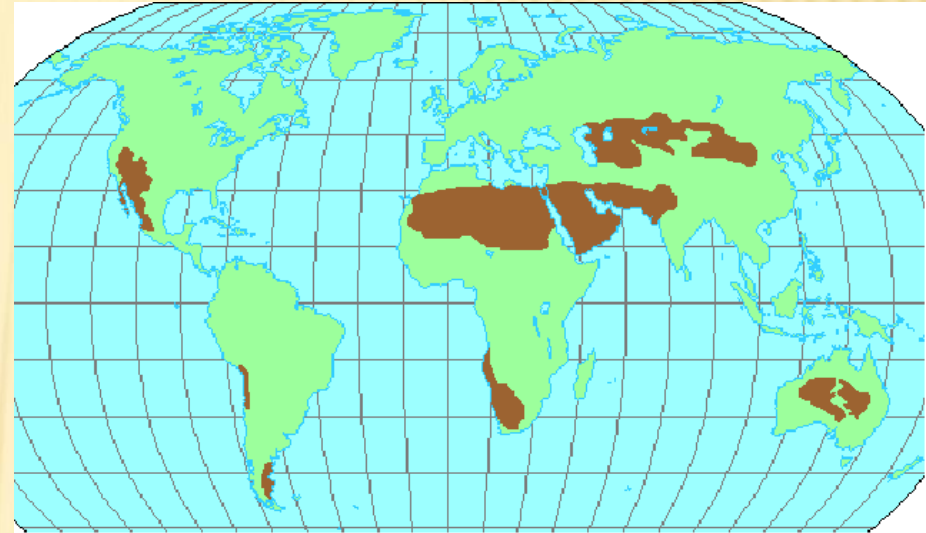


Gray Squirrel



DESERT

- ✘ Deserts cover about one fifth of the Earth's surface and occur where rainfall is less than 50 cm/year.
- ✘ Most deserts have a considerable amount of specialized vegetation, as well as specialized vertebrate and invertebrate animals.



Click here to take a look at the animals that live in this biome!

Video of Dessert Animals



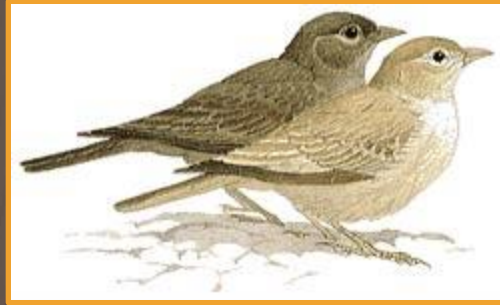
Quit



Addax



Desert Lark



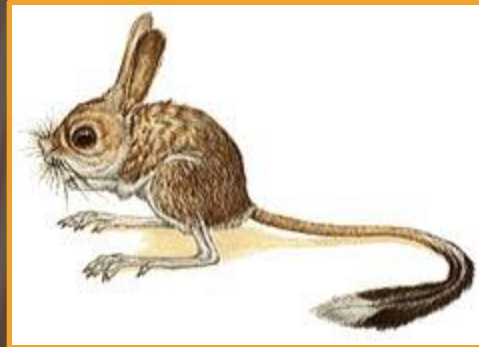
Dingo



ANIMALS THAT LIVE IN THE DESERT



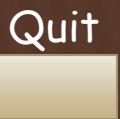
Sidewinder



Great Jerboa

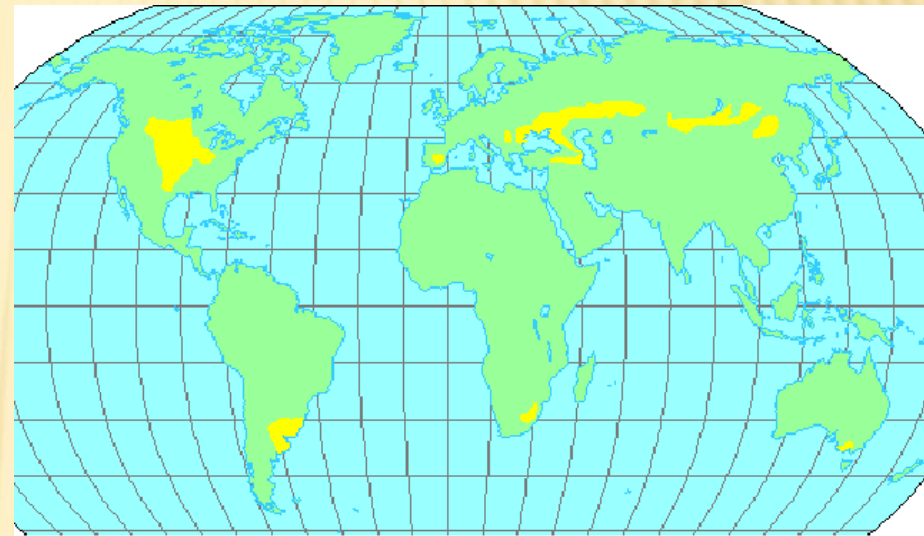


Gila Monster



GRASSLANDS

- ✘ Grasslands are characterized as lands dominated by grasses rather than large shrubs or trees.
- ✘ Since the development of the steel plow most have been converted to agricultural lands.



Click here to
take a look
at the
animals that
live in this
biome!



Quit



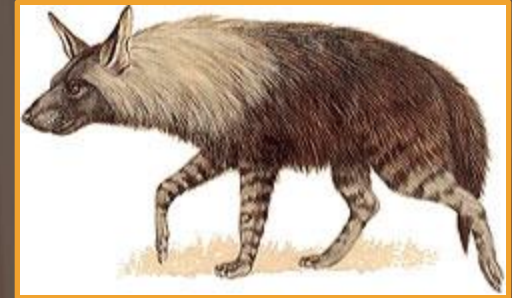
Bison



Black Rhino



Brown Hyena



ANIMALS THAT LIVE IN THE GRASSLANDS



Ostrich



Lion



Prairie Dog

