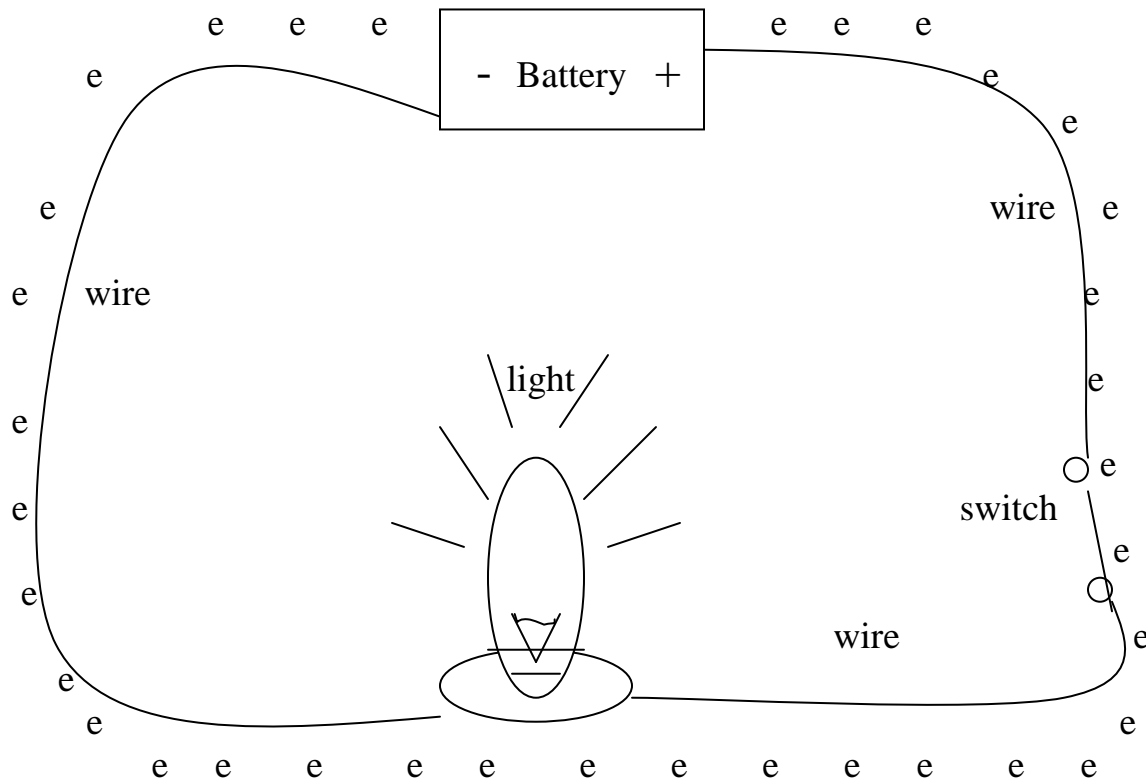


Name \_\_\_\_\_ Date \_\_\_\_\_

## Electron Flow



Electrons carry electricity through wires. In the picture above the electrons carry electricity from the battery to the light and back to the battery. The electron flow leaves from the positive side of the battery and comes back to the negative side of the battery. This type of electron flow is called direct current. In direct current the electron flow always goes from positive to negative in one direction. In the picture the switch is closed allowing the electrons to go through. If the switch was open the electrons could not flow through. The electrons would stop at the switch. See the picture on back.