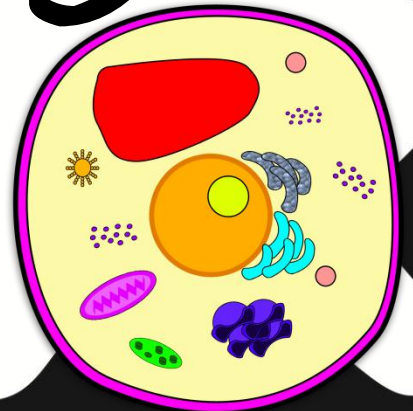
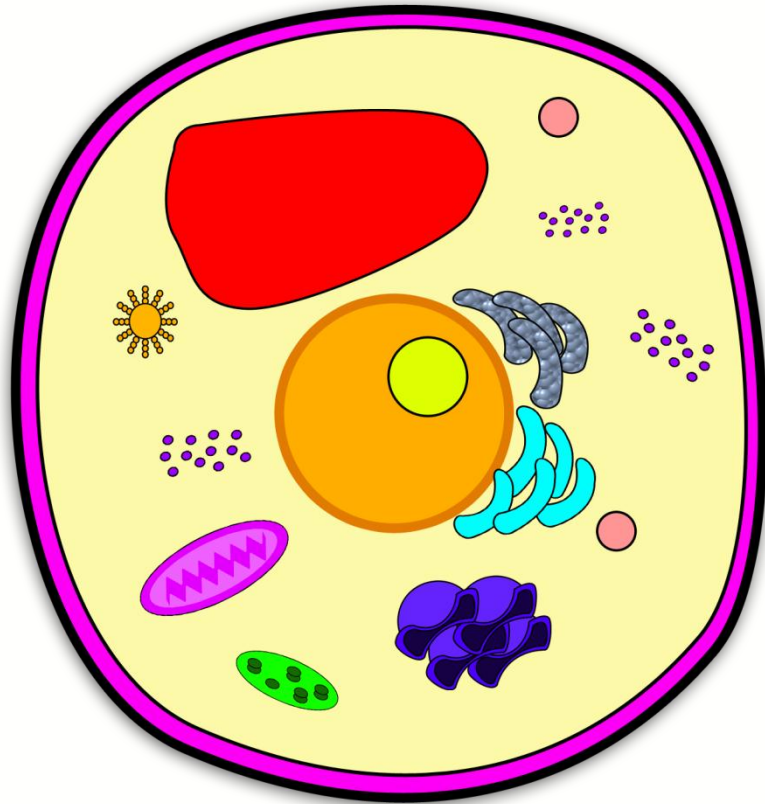
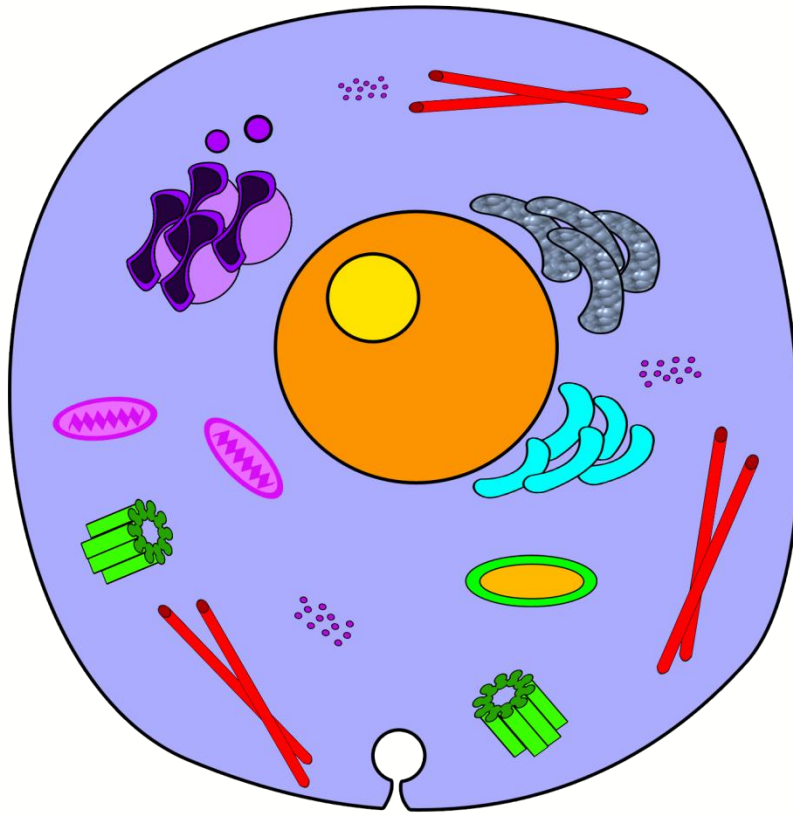


PLANT CELLS AND ANIMAL CELLS POSTERS

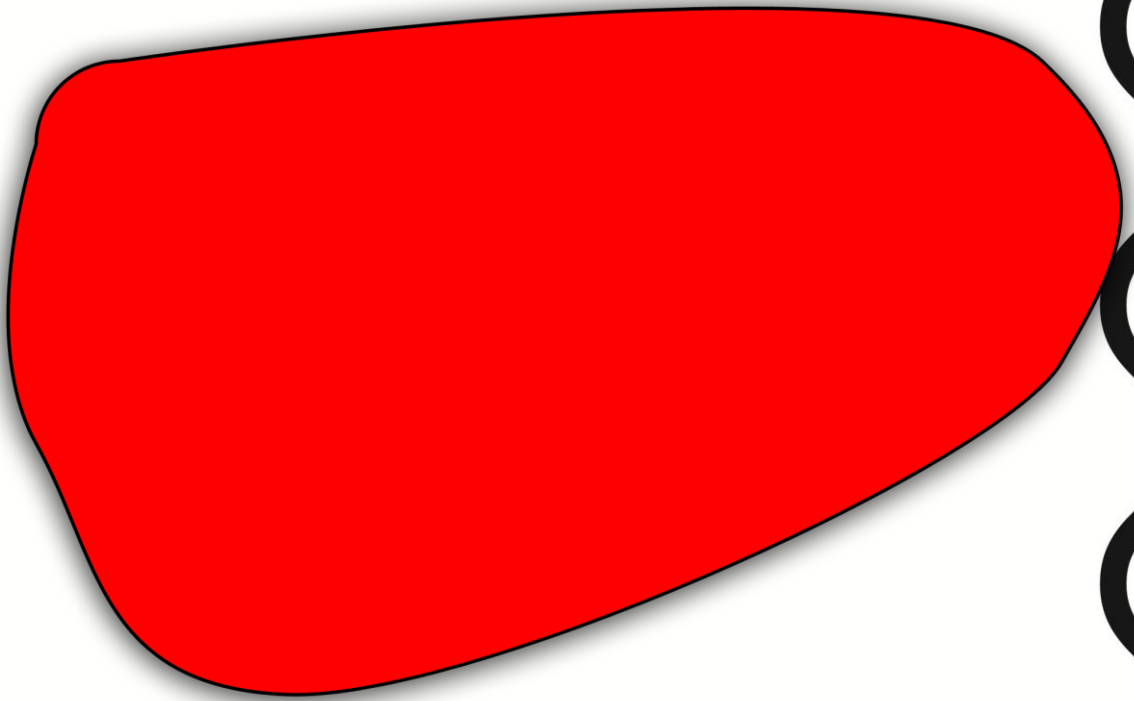




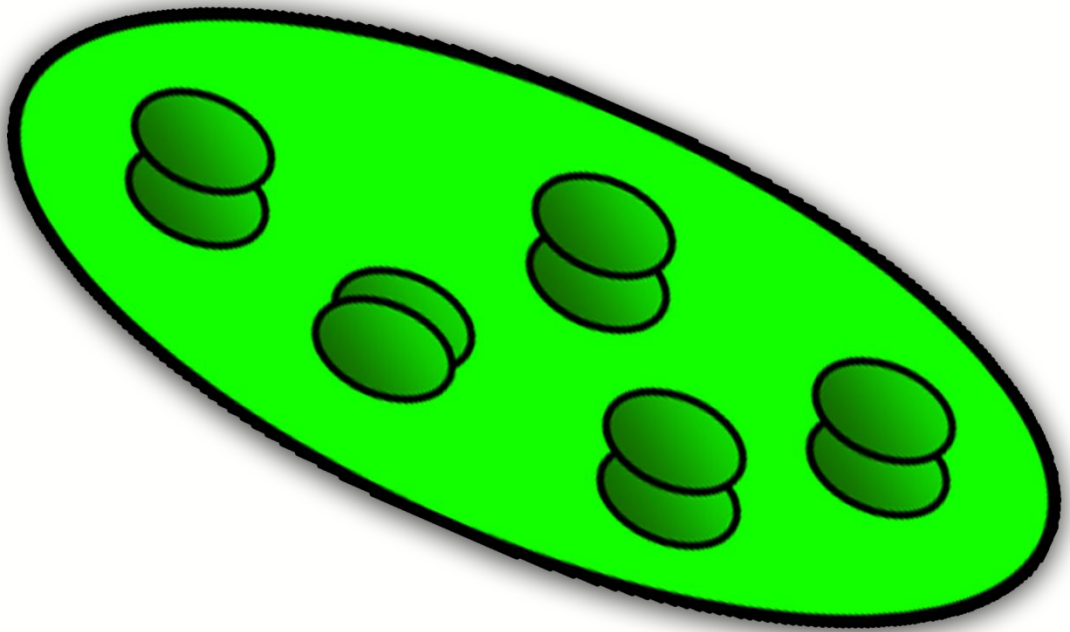
PLANT CELL



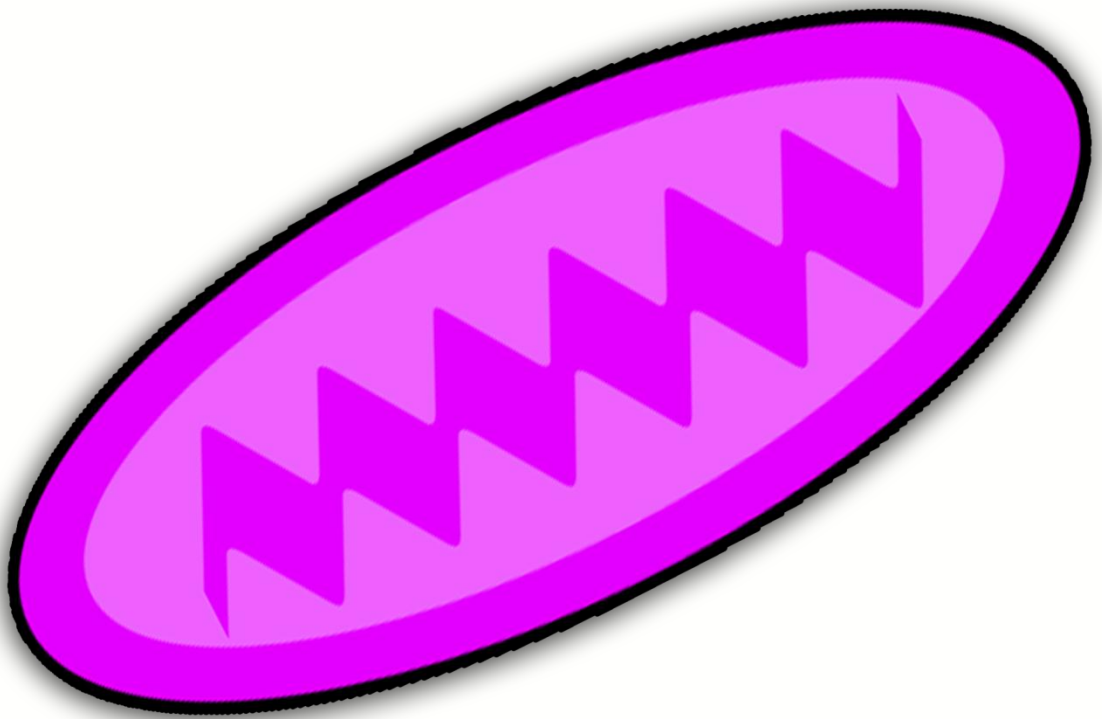
ANIMAL CELL



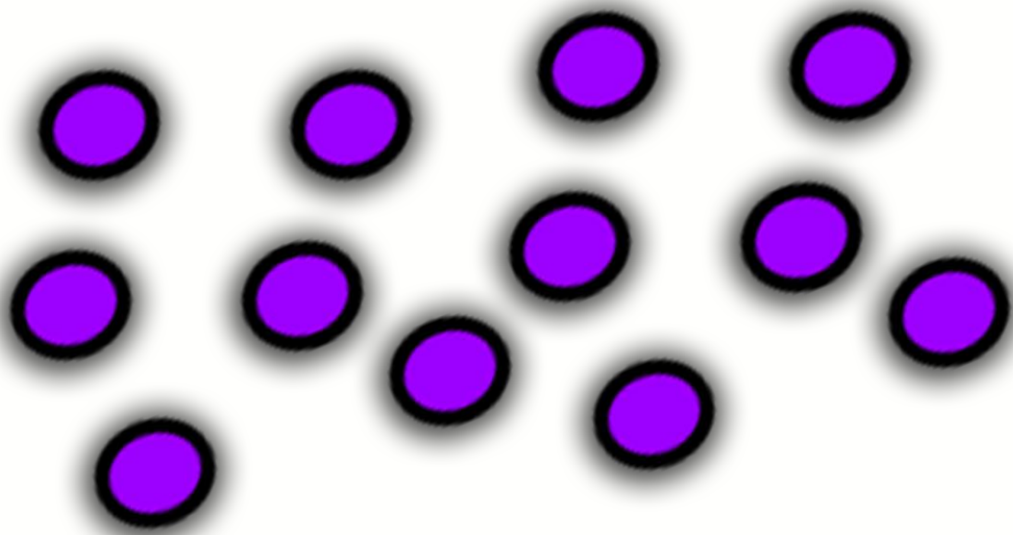
VACHOLE



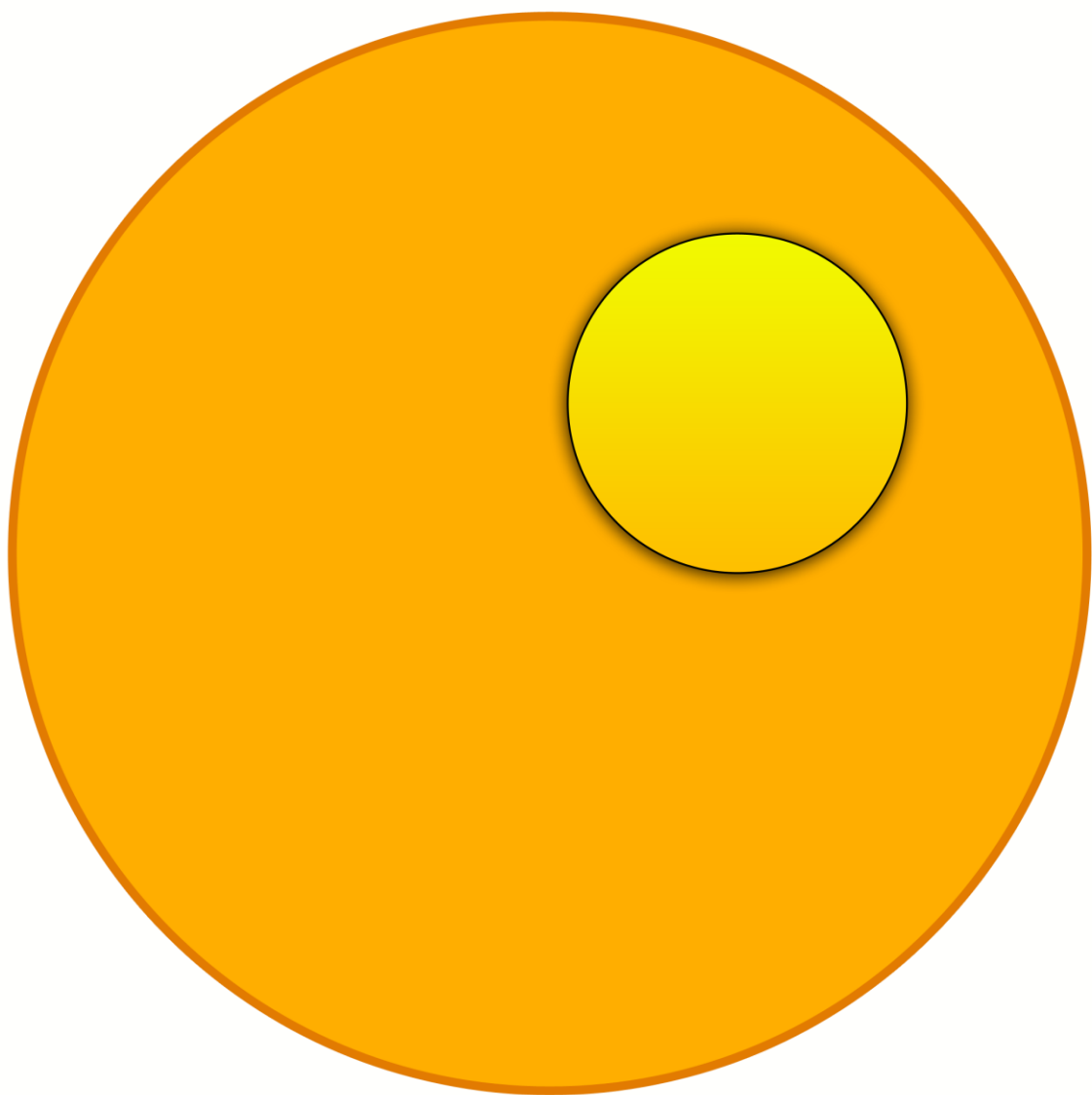
CHLOROPLAST



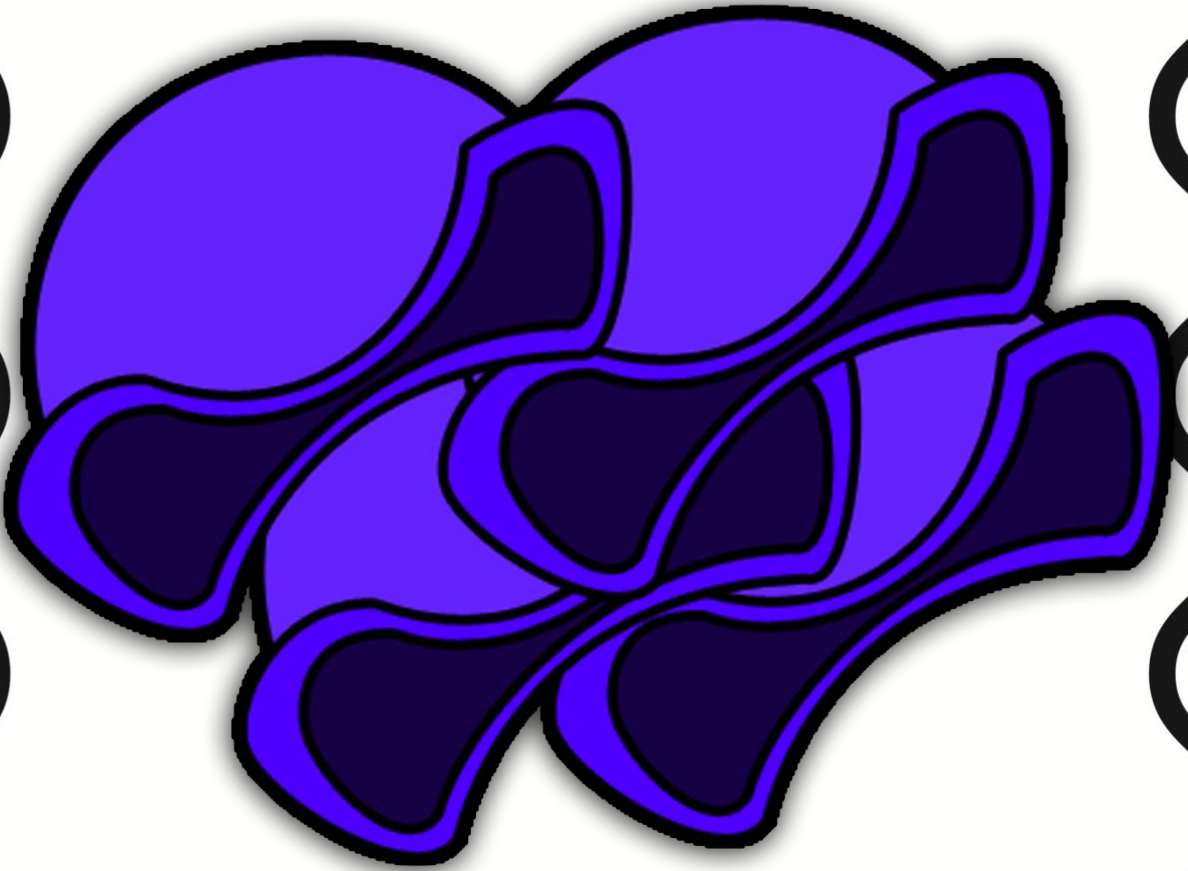
MITOCHONDRIA



RIBOSOMES

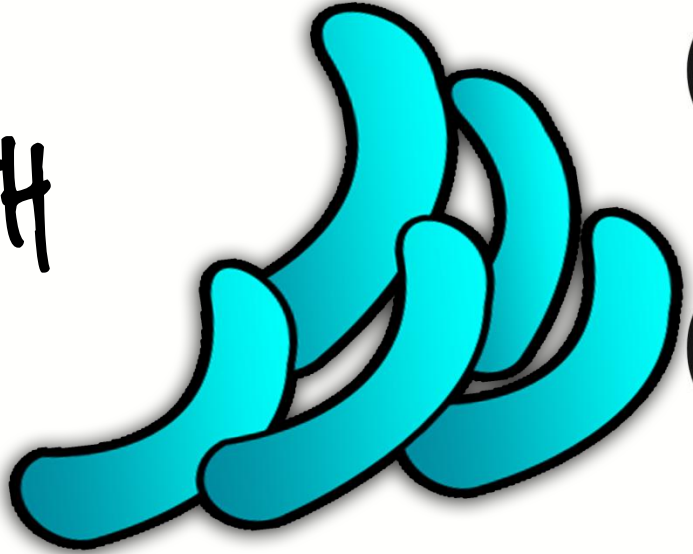


NUCLEUS

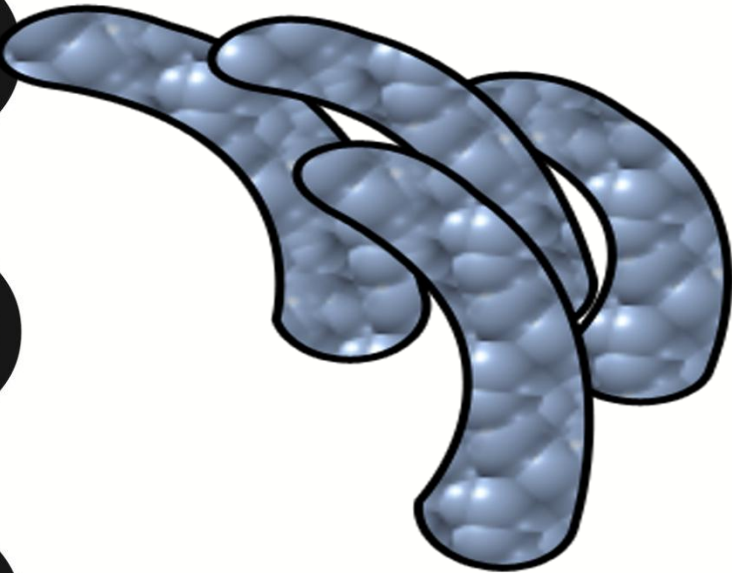


GOLGI APPARATUS

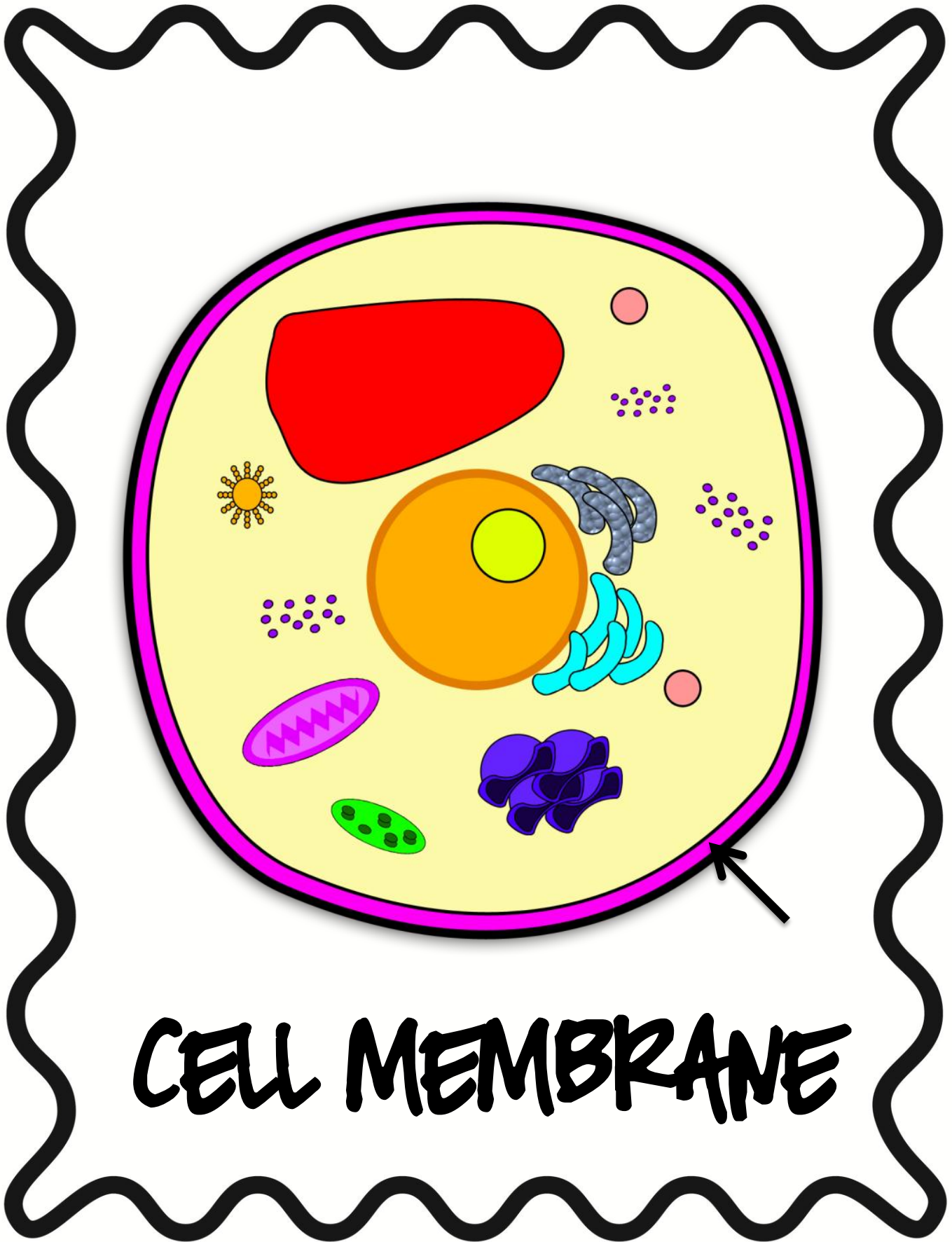
SMOOTH



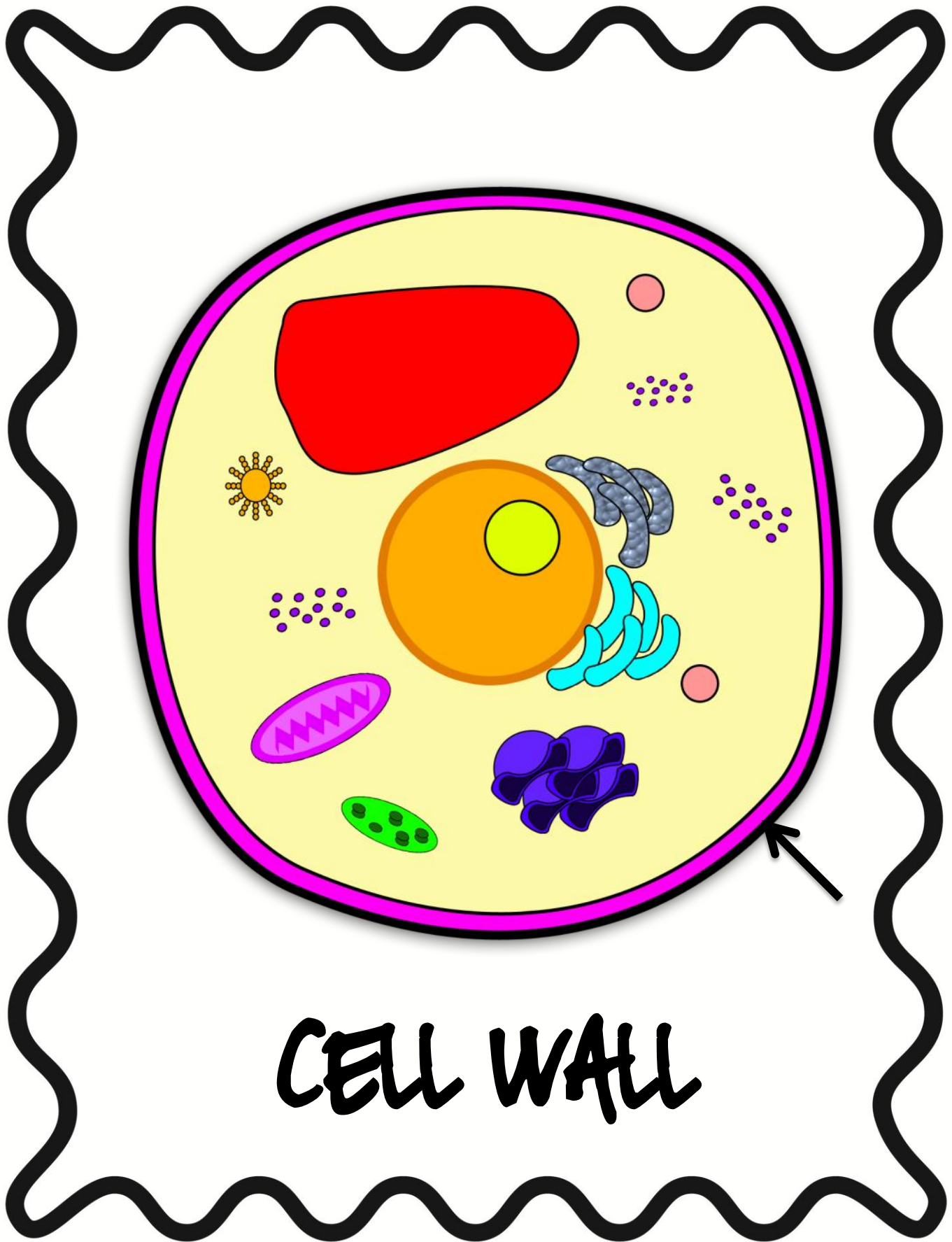
ROUGH



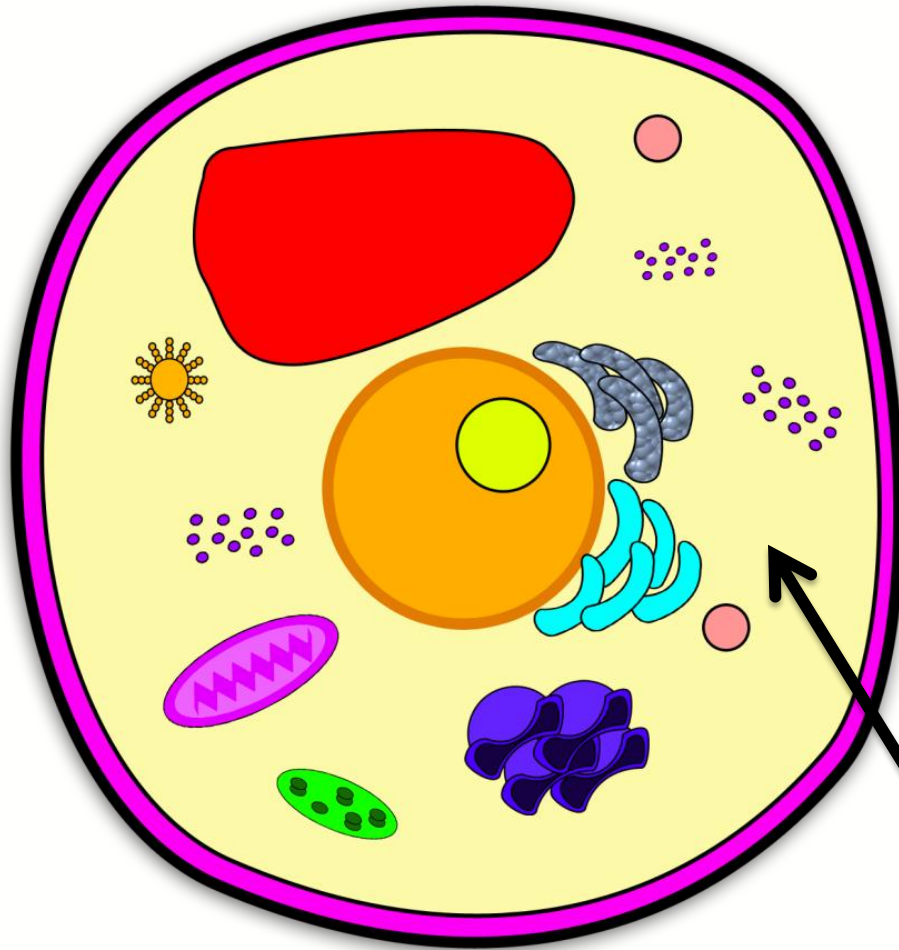
ENDOPLASMIC
RETICULUM



CELL MEMBRANE

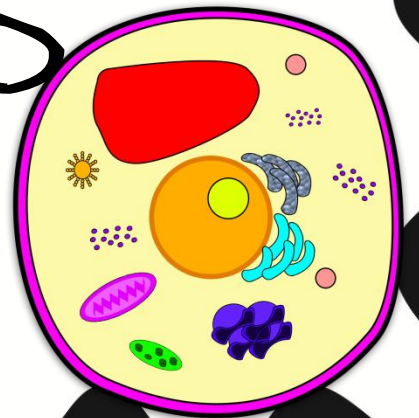
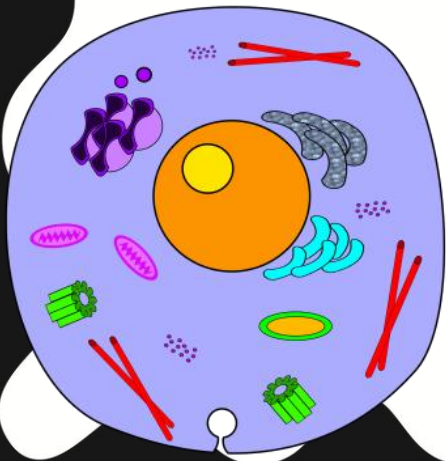


CELL WALL

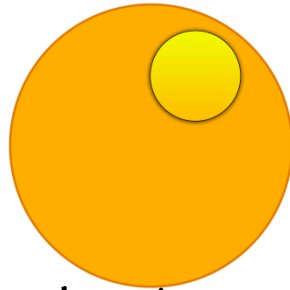


CYTOPLASM

Plant Cells and Animal Cells Vocabulary Cards

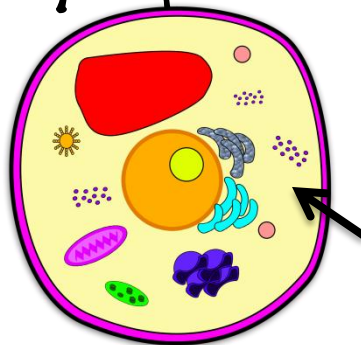


Nucleus



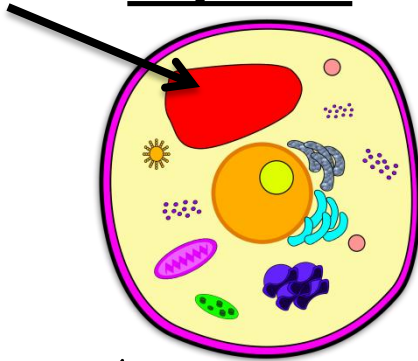
This is the brain of the cell. It controls the cell's activities.

Cytoplasm



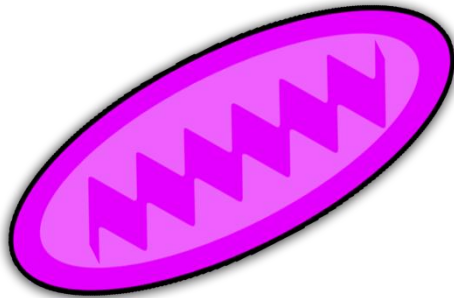
This is the jelly-like substance that holds and protects the cell's organelles.

Vacuole



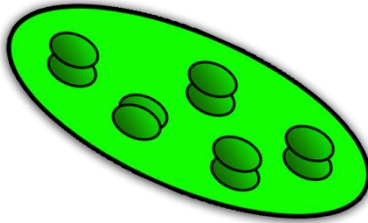
This is a large sac that holds food, water and waste.

Mitochondria



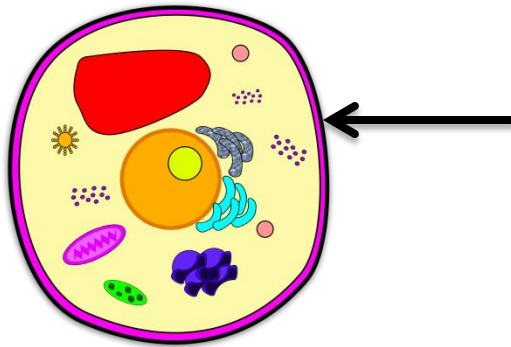
These structures are known as the powerhouse of the cell because they release energy.

Chloroplasts



This green structures found only in plant cells use energy from the sun to make food!

Cell wall



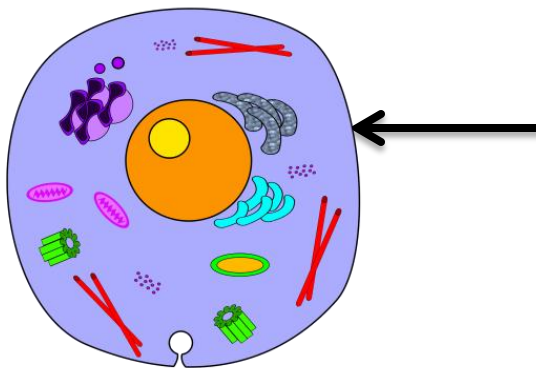
This is the outer layer of a plant cell. It supports the cell.

Golgi Apparatus



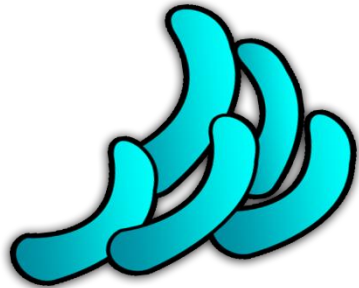
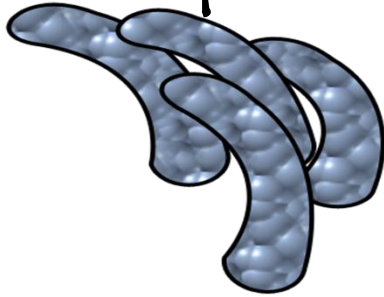
This structure packages and moves protein through the cell.

Cell Membrane



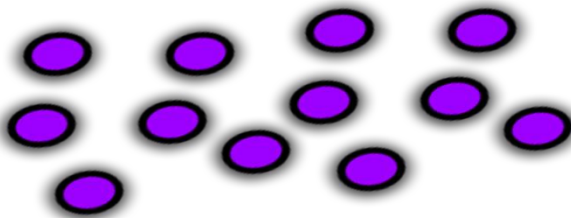
This is the outer layer of an animal cell and it controls movement in and out of the cell.

Endoplasmic Reticulum



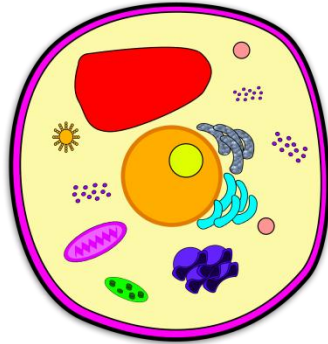
There are two types of this structure: a smooth and a rough one.

Ribosomes



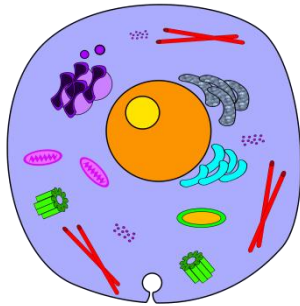
These organelles create proteins.

Plant Cell



These cells are basic building blocks of life in plants.

Animal Cells



These cells are basic building blocks of life in animals.

Credits

Graphics (Borders and Fonts):

<http://fromthepond.blogspot.com>

www.traceorman.com

Fonts:

www.kevinandamandafonts.com

Clipart:

Graphics from Teacher's Clipart

<http://teachersclipart.blogspot.com>